



- ◆ Continuous ink system
- ◆ Continuous ink supply system
- ◆ Continuous ink flow system
- ◆ Continuous ink feed system
- ◆ Bulk ink system

Unpacking Instruction

- 1).Continuous ink system 1 Set 2). Pipeline Clincher or Arm Support 1 Set 3).Installation Instruction 1 Copy 4).Syringe 1 Set

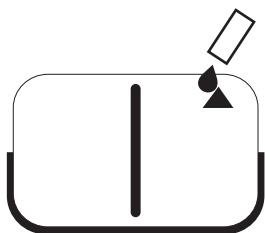
Attention

1. Not drinkable, keep it out of the reach of children
2. Avoid exposure to direct sunshine and don't keep it at the high or freezing temperature.
3. Avoid collision and falling down.
4. Please do not take out the cartridges at random after installing the CIS ink system.
5. Using it in the temperature of 10-40°C
6. The CIS ink system has passed the strict compatible checking, so we suggest using our ink and cartridges to keep the printing quality.
7. Mixing two different brand inks into the CIS ink system is not recommended.

8.Keep the ink tanks and printer in the same level. Do not place the tanks higher or lower than their printer

Refill ink

When filling ink , you should pull out the rubber plugs from the sprue of the ink cartridge, use a common syringe to connect to the sprue, pull the syringe piston for air-removing, the inks will then flow into the ink cartridge automatically. After filling, stuff the rubber

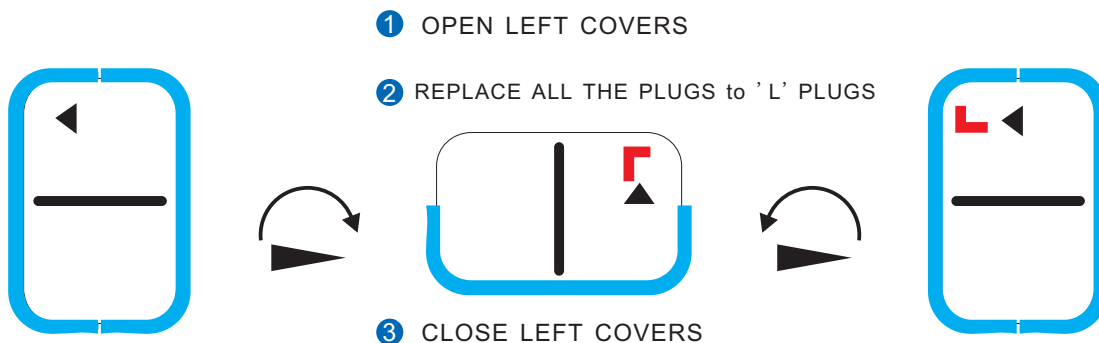


FILL INKS WITH A SYRINGE WITH NEEDLE



NEED REMOVE AIR WHEN FILL INK INTO EMPTY INK SYSTEM AT 1ST TIME

Tanks work :



WHEN WORKS, OPEN ALL THE PLUGS ON ARROW SIDES